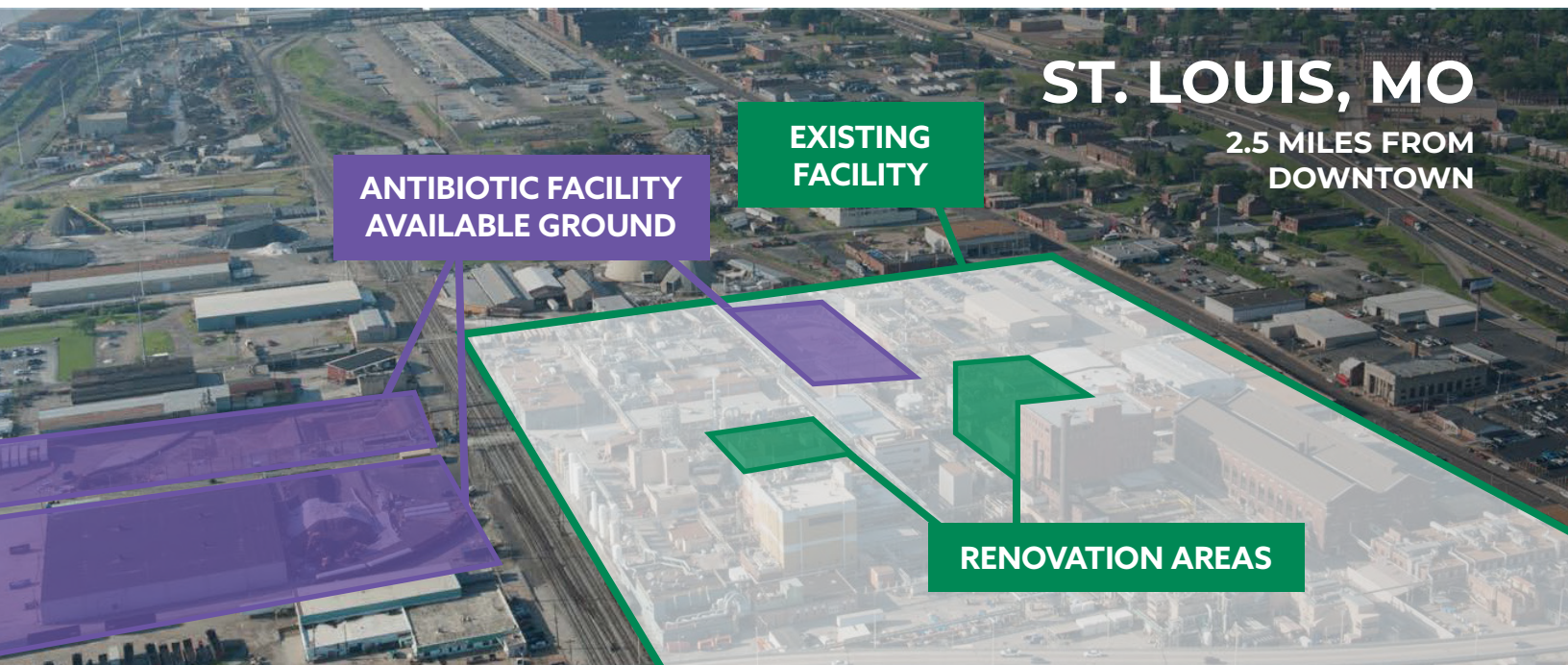


STRENGTHENING U.S. PHARMACEUTICALS SUPPLY CHAIN

Mallinckrodt is proposing two projects that will increase **pharmaceutical manufacturing** of essential medicines and enhance the domestic supply chain.



PROJECT 1

Renovate Existing Facility

Add **three new** multipurpose Active Pharmaceutical Ingredient (API) manufacturing **lines**

Increase essential medicine dose **production** capacity by tens of millions for US patients annually

Job Creation: 50 direct jobs at \$100,000
160 indirect jobs
230 construction-related jobs

\$175.3 MILLION PROJECT

PROJECT 2

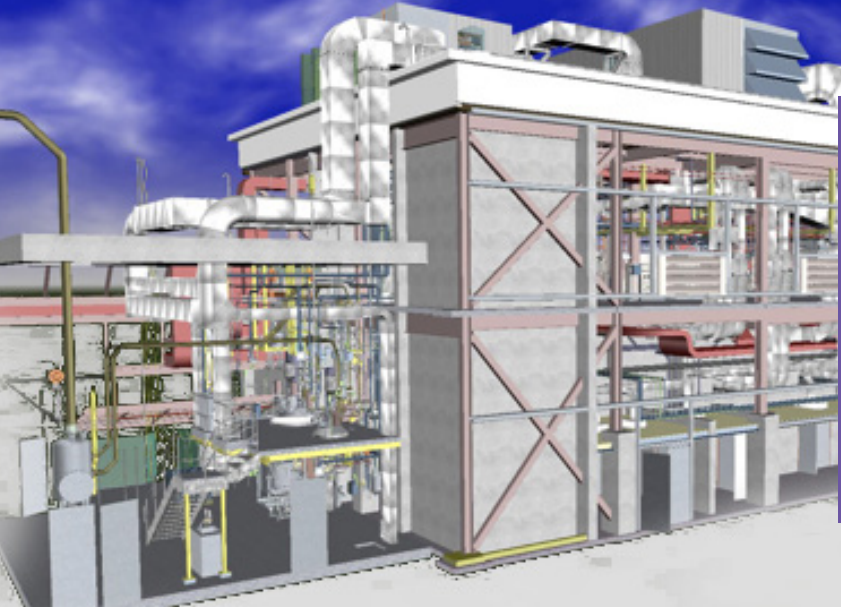
Construct New Antibiotic Facility

Will add **five** multipurpose Active Pharmaceutical Ingredient (API) manufacturing **lines**

Expand new antibiotic dose **production** capacity by hundreds of millions for US patients annually

Job Creation: 50 direct jobs at \$100,000
150 indirect jobs
1,120 construction-related jobs

\$375 MILLION PROJECT

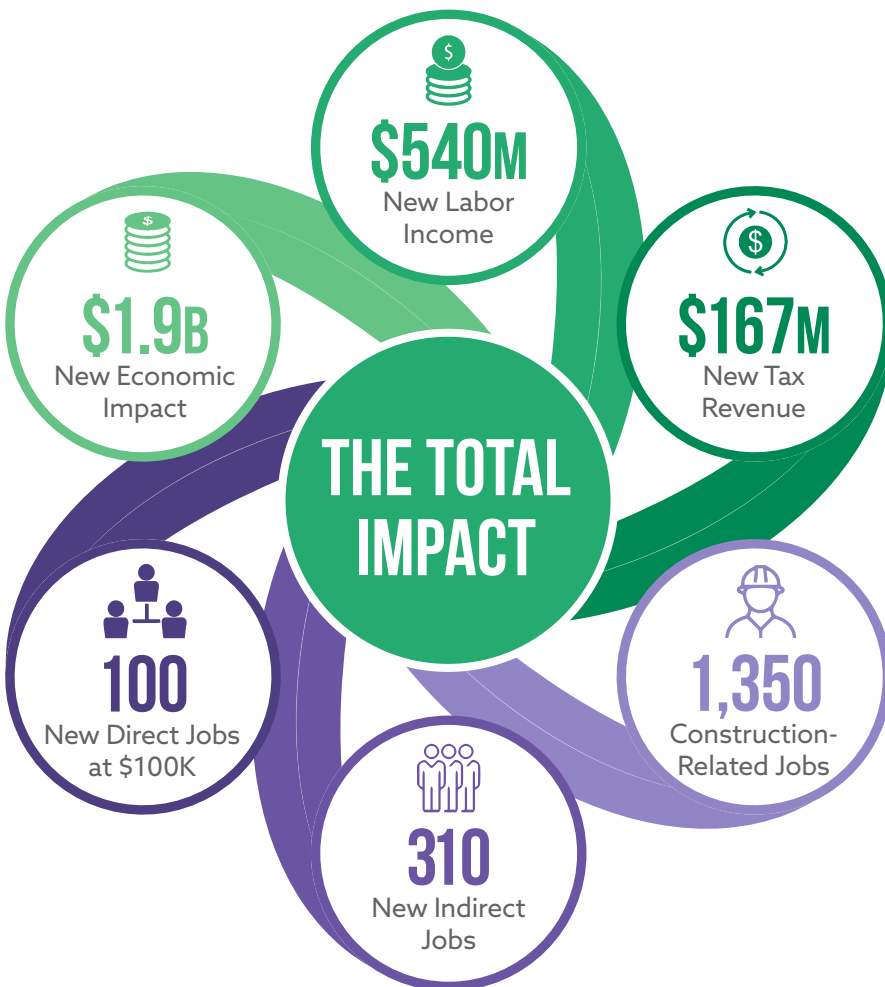


THE ST. LOUIS PLANT PROJECT WILL HELP:

- Decrease the nation's dependence on foreign sources of API and finished dose medications
- Increase the security of the nation's drug supply
- Generate sustainable employment opportunities

**Rendering of proposed manufacturing facility*

ST. LOUIS REGIONAL BENEFIT



WHY MALLINCKRODT?

Largest manufacturer of APIs by volume and the only FDA approved cGMP large-scale, vertically-integrated manufacturer capable of completely producing essential medications in the U.S.

Established API manufacturing with **more than 150 years** in business.

Global competitiveness made possible with our U.S. based **end-to-end manufacturing** network.

Source: AllianceSTL 'The Economic Impact of Mallinckrodt's Proposed Manufacturing Projects'. St. Louis MSA. January 2021



In collaboration with Greater St. Louis, Inc (GSL), this initiative supports the GSL's STL 2030 Jobs Plan priorities of inclusive growth, development of the city's urban core, and leverages the bioscience sector.

GREATER ST. LOUIS INC.